



Madrone LEAVES

Madrone Audubon Society, Inc., Post Office Box 1911, Santa Rosa, California 95402

VOLUME 52 April/May 2019 Number 5

Point Reyes National Seashore – a Birder’s Hotspot

Of all of the natural treasures of the North Bay, the Point Reyes National Seashore (Pt. Reyes) is especially significant for lovers of birds. Pt. Reyes tops all of the US national parks in diversity of bird species – 490 – an amazing 54% of all North American bird species. Located in Marin County, south of Tomales Bay and just north of Bolinas Lagoon, Pt. Reyes is a triangular-shaped piece of land jutting out into the Pacific Ocean which acts as a magnet for birds migrating along the Pacific Flyway. Since it juts out, in Fall it is a migrant (or vagrant) trap for Eastern warblers which are way off course. This special park was named the National Audubon’s Society’s #1 birding hotspot in 2017 and 2018 and is closely monitored by avian specialists and a host of volunteer birders.

The Point Reyes Important Bird Area (IBA) includes a variety of habitats, from rocky headlands, sandy beaches, and pastureland, to dune lakes and Drake’s Estero, one of the largest coastal estuaries in California. The National Audubon Society explains the importance of Pt. Reyes for bird life as follows:

“This IBA includes 38 threatened and endangered species along the shoreline and water. The areas of this IBA most important for bird conservation include the vast saltmarsh and mudflats of Drake’s Estero, which support very large numbers of waterbirds in migration and winter. The headlands and offshore rocks within this IBA are critically important to a diverse nesting seabird population that includes Ashy Storm-Petrel (74 at Bird Rock, off Tomales Pt.), Rhinoceros Auklet and Tufted Puffin (handful on Pt. Reyes proper), all localized in the state (Carter et al. 1992). These are concentrated in three areas: Bird Rock, in the north near

Tomales Point; the headlands at Pt. Reyes proper (southwest of Drake’s Estero); and offshore rocks within Drake’s Bay southeast

of Drake’s Estero. The sandy beaches in the area host nesting Snowy Plover (declining, [per] Dave Shuford), particularly along

Continued on page 2

GENERAL MEETING

First United Methodist Church • 1551 Montgomery Drive, Santa Rosa
Monday, April 15, 2019, 7:00 PM

“Raptor Identification and Natural History”

Learn about the natural history and identification of raptors with rare regional updates by Larry Broderick from West County Hawkwatch. Larry has wonderful first-hand stories from the field and an abundance of interesting information about raptor habits, identification, and suggestions of where to see them, as well as some one-of-a-kind and rare special surprises. Larry’s generous sharing of his expertise continues after you participate in an outing, and he is available for questions, as a resource and reference into the future. Our members enjoy Larry’s interactive style to hone our skills and become more experienced in observing, identifying and understanding.



Adult Ferruginous Hawk
Courtesy of Don Bartling

Larry Broderick is a local Birds of Prey Natural History and Interpretive Specialist, Jenner Headlands Hawk Watch Director and Certified California Naturalist. Larry has been working with Birds of Prey as an educational specialist for over 25 years. He oversees West County Hawkwatch and conducts surveys for many organizations.

ANNUAL MEETING and POTLUCK

First United Methodist Church • 1551 Montgomery Drive, Santa Rosa
Monday, May 20, 2019, 6:00 PM

Bring a dish to share (entree, salad or dessert), and if possible, bring your own plate, cup and utensils. We will provide drinks; sorry, no alcoholic beverages allowed at the church. Help with set-up before dinner (beginning about 5:15 PM), or with cleanup afterwards, is appreciated. Arrive 5:15-5:30 PM – we’ll give you a task! During dinner, enjoy our Chapter awards presentation and announcement of recipient of the 2nd annual Ernestine Smith/Madrone Audubon scholarship. **Installation of officers and speaker 7:00 PM.**

“Our Northern California Wild World”

Join us for our last meeting before Summer, for an inspiring visit through Tom Reynolds’ eyes with birds and wildlife of northern California. From Sonoma to Modoc Counties and the Sierra Valley, Tom will share natural scenes and wild wonders. Portions of the presentation will include Tom’s annual creative videography for the Lincoln Elementary School Bird and Nature Festival, hosted each year by Madrone Audubon with Audubon Canyon Ranch and the Bird Rescue Center.



Great Egret with nesting material
Courtesy of Tom Reynolds

Tom Reynolds is a naturalist and wildlife photographer whose photography is recognized and enjoyed for captured moments of natural connections, honoring the environment, without disturbing birds or wildlife in the process. Tom leads bird and nature walks and has a long history of supporting Sonoma County Regional Parks with nature photography and service.



POINT REYES

Continued from page 1

North Beach and Limantour Spit. The open fields in the area are also important for open-country migrants and winterers, including shorebirds such as the localized Pacific Golden-Plover, which winters at just a handful of sites in California. Finally, the scattered clumps of trees associated with ranch yards within this IBA have long been known as important migration hotspots, with hundreds of songbirds crowding into planted groves of cypress, particularly in fall. The Pt. Reyes



Immature Pine Warbler Courtesy of Gordon Beebe

IBA contains 9 seabird species and an estimated 43,061 birds. The colony is an IBA for the following species: Ashy Storm-Petrel (15), Rhinoceros Auklet (6), Tufted Puffin (4), Brandt’s cormorant (1,160), Common Murre (40,810), Pelagic Cormorant (266), Pigeon Guillemot (616), and Western Gull (178). The following species are on the Audubon WatchList: Ashy Storm-petrel.” (Source: www.audubon.org/important-bird-areas/point-reyes-outer)

Gordon Beebe, past president of Madrone Audubon, current webmaster, and leader of Madrone’s Saturday bird walks, shared the following thoughts about this unique environment: “Point Reyes has always been a special place to me, ever since, as a teenager I first read of the seemingly magnetic draw it holds on rare migrant bird species each spring and fall. During college, I spent a year and a half volunteering at the Palomarin Field Station, banding birds six days a week. One morning in spring, the staff woke up to the

sounds of a Wood Thrush singing in the dense woods next to the facility. Another time, we caught a male Chestnut-sided Warbler in full breeding plumage, for up-close looks at a very pretty eastern warbler. Since then, I have returned to Pt. Reyes every fall for the last eight years, leading the Madrone Audubon Saturday bird walk to look for birds at several locations all of the way out to the lighthouse and Chimney Rock. Every year it is different, but there is always something exciting to see amidst the unparalleled scenic beauty. Mark your calendar: this year’s trip will be on September 28th.”

A visit to Pt. Reyes is an exceptional experience for naturalist wanna-bes as well as experienced birders. Asenath LaRue writes: “Everything about Pt. Reyes was new to me on a first visit a few years back. Never having lived along the California coast, I could identify only a handful of birds and even fewer of the coastal plants. But, as luck would have it, I chanced upon one of those amazing Pt. Reyes amateur birders who knew a lot and was happy to share. Much of what I was told that day has escaped my memory (including the name of the generous birder), but I came away with an appreciation for scrubby “coyote bush” (*Baccharis* sp.) which supports many native insects and birds, and a name for that small black busy flycatcher (Black Phoebe) that frequents scrubland along the coast and many inland areas.”



Elephant seal Courtesy of Tom Reynolds

Pt. Reyes is not just home to birds, of course. The first breeding pair of elephant seals appeared at Chimney Rock on the Point Reyes Headlands in 1981, after an absence of more than a century and a half. By now, the breeding colony is estimated at about 3,000 animals, still centered at Chimney Rock, but scattered along several



other beaches as well. Visitors have been able to view the seals at a distance from an overlook at Chimney Rock, but this year, some had the opportunity to view seal pups and moms up close. A recent article in the Press Democrat (2/1/19, by Mary Callahan) explains how this came about: “During the recent, 35-day federal shutdown, when only a few law enforcement officers in the park were on duty, about 50 female elephant seals, a dominant bull and several subordinates landed on the beach [Drake’s beach] and stayed, perhaps driven off less-protected beaches by large winter storms and king tides, park staff members said. About 40 pups have since been born, forcing the park to close the beach and the drive down from Sir Francis Drake Boulevard. During storm activity and high water, some of the elephant seals even crossed a band of ice plant into the parking lot and a picnic area near the visitor center.” Most years, when only a few adult seals came ashore at popular beaches, park rangers discourage them from staying to avoid potential conflicts with humans. But faced with this larger birthing colony, settled in during the shut-down, park administrators decided to treat it as an educational opportunity and organized up-close observations at Drake’s beach led by knowledgeable guides. What a rare good thing to come of the federal shut-down! For more on the history of elephant seals at Pt. Reyes and tips on seal-watching, visit www.nps.gov/pore/planyourvisit/wildlife_viewing_elephantseals.htm.

Continued on page 3



Volunteers Needed for Lincoln School Bird Day

by Janet Bosshard

Every May, the Madrone Chapter of the Audubon Society gives a half-day program for all the classes at Lincoln School, on West 9th Street in Santa Rosa. This was initiated in part because of the 9th Street Rookery, where Great and Snowy Egrets and Black-crowned Night Herons roost in the trees in the middle of the street. Our friend, Kathie Noguchi, who was a teacher at Lincoln School, was instrumental in keeping this program going through the years, and we will continue her legacy.

We are looking for volunteers to help, hours approximately 8:00 AM to 12:30 PM, Friday, May 10, 2019. The activities range from art projects, garden talks; worms, butterflies, and bats, slide shows, live birds from the Bird Rescue Center, visits to The Rookery near the school, etc. Please let me know if you are available to help on this day.

Janet Bosshard, one of the volunteer coordinators, bosshard@sonic.net

Viewing Scope Donated to Our Chapter

Madrone Audubon wishes to acknowledge members Cathy Vancik and Jim Davis for donating a Bausch & Lomb Elite ED viewing scope with tripod, case and carrier. The scope will be used for our Phenology Project at the Paula Lane Nature Preserve and for other youth-related activities. We're grateful to Cathy and Jim for their generous donation!

A note to all Madrone members...

Do you have bird observations or nature experiences to share? Something seen in your backyard, on a walk or hike in one of Sonoma County's parks or open spaces, or on a recent vacation? Please send a brief description (and a photo if you have one), and *Leaves* will include as many of these contributions as we can in the **Members' Column**.

Welcome, New Members

Petaluma

Nancy & Robert McFarland
Nanette Tufts*

Santa Rosa

Lorraine Duncan & Pat Pointe
Victoria Hand
Anne Murphy*
Jennifer & Andy Ryan

Sebastopol

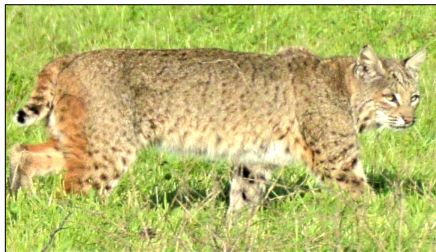
Madelon Greenspan
Chloe O'Gara*
Patricia McCarthy*
Elizabeth Sutton*

*Gift memberships
from Nancy Hand

POINT REYES

Continued from page 2

Who else calls Pt. Reyes home? The photos by Tom Reynolds that grace this article give a glimpse of a few of the resident mammal and marine species. Susan Kirks, Naturalist and Madrone Audubon's current President, has monitored the Pt. Reyes National Seashore for many years



Bobcat

Courtesy of Tom Reynolds

for the small sustaining American Badger population there. Susan will present about badgers in this year's Festival programs.

The 10th Annual Pt. Reyes Birding and Nature Festival – April 26th to 28th – is

a perfect opportunity to learn more about the Pt. Reyes National Seashore. Initiated in 2010 by the Environmental Action Committee of West Marin, this festival includes field outings and classroom events in Marin and Sonoma counties focused on birds, wildlife, plants and marine life, combined with opportunities for hiking, biking, kayaking, art, and field photography. People of all ages and levels of experience are welcome, and there is a free youth program on Saturday. This year's keynote speaker is Kenn Kaufman, lifelong naturalist, and the originator and editor of the Kaufman Field Guides series. To learn more about the festival, go to www.pointreyesbirdingfestival.org.

Visit the National Parks Pt. Reyes website for recommended bird watching sites and a listing of projects and activities – www.nps.gov/pore/index.htm. Additional recommendations for birding



Tule elk

Courtesy of Tom Reynolds

in Pt. Reyes can be found at www.alltrails.com/parks/us/california/point-reyes-national-seashore/birding.

And be sure to check the Summer and September issues of *Leaves* or the Madrone website for details of the birding outing that Gordon will lead on September 28th.

Contributors to this article: Gordon Beebe, Diane Hichwa, Susan Kirks, and Asenath LaRue



Help Our Chapter

BIRD-A-THON - BAT – still time to participate!

The 2019 BAT is in full-swing and there are still opportunities to contribute - as a birder/counter to help on a “big day” and/or as a sponsor of one or more teams. BAT is THE major fundraiser for Madrone Audubon and supports our Lincoln School bird and nature program, Christmas Bird Count, W. 9th St. nesting support project, Paula Lane Nature Preserve Phenology Project, youth and family bird walks, bird checklist project for Regional Parks, Audubon Adventures, Breeding Bird Atlas analysis/website, and other conservation efforts.

You can sponsor any team by making a single donation, or pledge per species observed. Contributions of any amount are welcomed. Contact any of the team leaders or members, or Carolyn Greene

at cgnpark@icloud.com to participate. We will also take signups and sponsors at our March, April and May general meetings.

We thank the teams and their leaders: **Feather Questers** (Diane Hichwa), **Burrowing Owl**ers (Susan Kirks), **Zonotripias** (Bill Doyle), **Grey-headed Seersuckers** (Ken Wilson), **March Madness Eco Team** (Gene Hunn – big day by bicycle!) and **Roadrunners** (Carolyn Greene & friends) – and all the team members.

Donations and pledges are due by Monday, May 10. All donations are tax deductible. Watch upcoming issues of *Leaves* for outcomes of this year's BAT.

Serve on the Board

Dear Members,

Currently, our Board of Directors has openings – please consider serving your Chapter for a year. Our Board meets in Santa Rosa once a month, except for summer months. If you live in Petaluma, Cotati or Rohnert Park, carpooling may be available. We endeavor to be efficient and use our time wisely. Many Board members have several commitments, including working – we also want to serve our Chapter with the best decisions and actions on behalf of our members for bird and wildlife appreciation and environmental protection in our beautiful County.

Some current openings:

Recording Secretary

Takes notes (written or via computer) at our Board meetings, produces draft minutes and finalizes the minutes for the record of our meetings.

Skills: Note taking, typing, computer access with Microsoft Word helpful, printer or USB drive to provide for printing.

Time Requirement: Board meeting attendance once a month for 1.5 hours, except summer months. One hour to produce draft and finalize.

Corresponding Secretary

Receives information from membership and donations to produce letters of gratitude or other correspondence, working with the President. Some months, no activity. One or two times annually, larger quantity of letters/membership renewals, end-of-year donations.

Skills: Computer access with Microsoft Word and Excel programs. Printer or USB drive to provide for printing. Tasks are primarily to format and produce letters.

Time Requirement: Board meeting attendance once a month for 1.5 hours, except Summer months. One-two hours per month for the letter production tasks, using information from cash logs, etc.

Program Chair

Explores possible interesting topics and current events and reaches out to schedule speakers for our monthly membership meetings. Hosts the presenter and introduces her/him to our membership for the presentation. We have 8 meetings a year at the United Methodist Church, Fellowship Room. Currently, most of our presenters are scheduled through May 2020, so your role would be to help host and enjoy interacting with each presenter.

Time Requirements: Board meeting attendance once a month for 1.5 hours, except summer months. One-two hours per month for exploring possible topics and presenters, reaching out, confirming dates for presentations, plus attending membership meetings where possible.

Newsletter Editor

Our editor, Asenath LaRue, currently edits the *Leaves* newsletter from her new home in Wisconsin. The role of the editor is to encourage and accept input for articles and updates for the *Leaves* newsletter, coordinate and organize the information received, then collaborate with our production editor who creates the layout for proofing and with the printer for the paper version. The Board President provides much of the content and also support in proofreading. We publish 6 newsletters annually. Microsoft Word use with your computer, and your creativity, are welcomed in this role.

Time Requirement: Board meeting attendance once a month for 1.5 hours, except Summer months, if possible. In months we produce our newsletter, 8 to 10 hours total are likely required. You would have the excellent services of the production editor to make the final product look good! So, it's mainly communicating with contributors, collating and minor editing of articles, and occasional written contributions (as your interests and time permit) that are needed from the *Leaves* editor.

The best way to show your appreciation for current and past Board members, and for the organization, is to volunteer with us. We're flexible and appreciate your consideration. If you can help and/or have questions, please contact us! (Susan Kirks, Chapter President, susankirks@sbcglobal.net, or 707-241-5548). Thank you!



All walks and membership meetings are open to the public. Bird walks are recreational and educational in purpose, and all levels of expertise are welcome. Bring field equipment and wear comfortable shoes and layered clothing for variable weather conditions. Please carpool whenever possible. Forecasted heavy rain cancels. There is no charge for activities unless otherwise specified, but some parks have day-use fees.

April 2019 Calendar

CONSERVATION COMMITTEE exchanges information by phone and email as soon as possible when an issue surfaces. Please contact Diane Hichwa at 785-1922 or dhichwa@earthlink.net.

Thursday, April 4, 7:00 PM

BOARD MEETING. Sonoma County Environmental Center, 55A Ridgway Avenue, Santa Rosa. For agenda information, contact Susan Kirks at susankirks@sbcglobal.net.

Saturday, April 6, 8:00 AM to noon

SANTA ROSA CREEK at WILLOWSIDE ROAD. We will walk from Willowside Road to Delta Pond and back. Expect a variety of riparian residents and recently-arrived migrant species. Meet on the southwest side of the bridge over Santa Rosa Creek, on Willowside Rd., mid-way between Hall Rd., and Guerneville Rd. Leader: Gordon Beebe, 583-3115 call or text msg.

Monday, April 15, 7:00 PM

GENERAL MEETING. First United Methodist Church, 1551 Montgomery Drive, Santa Rosa. "Raptor Identification and Natural History." This is a free event and all are welcome.

Thursday, April 18th, 8:30AM to 10:30 AM

BODEGA BAY. We will meet at Campbell's Cove, foot of the road going up to the Head. Weather is variable. Be prepared for wind, fog, and wet or it could be nice and sunny. Layers work well. Shorebirds are ready for their migration north to breed. We will look for the colorful breeding plumage. If we visit Doran Beach, you will need a park pass or pay a \$7 visitor fee. Leader: Janet Bosshard, 526-5883.

Saturday, April 20, 7:30 AM to noon

RIVERFRONT REGIONAL PARK. Spring should be in full swing, with lots of singing birds and nesting activity. Meet in the parking lot near the redwoods and picnic area. From Windsor, take Windsor River Rd west, then head south on Eastside Rd for about one mile. The park entrance will be on the right. We will walk the loop trail around the lakes, and check out the Russian River view as well. There is an entry fee of \$7 if you do not have a park pass. Leader: Gordon Beebe, 583-3115 call or text msg.

May 2019 Calendar

Thursday, May 2, 7:00 PM

BOARD MEETING. Sonoma County Environmental Center, 55A Ridgway Avenue, Santa Rosa. For agenda information, contact Susan Kirks at susankirks@sbcglobal.net.

Saturday, May 4, 7:30 AM to 3:00 PM

PINE FLAT ROAD. A bird-rich outing, exploring the length of this unique road. Turn onto Pine Flat Rd., east of its intersection with Hwy 128, north of Healdsburg, then park on the right next to the vineyards just past Red Winery Rd., and before the bridge. We will combine into as few cars as possible, head to the top, and work our way back down. Bring Lunch. Leader: Gordon Beebe, 583-3115 call or text msg.

Friday, May 10, 8:00 AM to 12:30 PM

LINCOLN SCHOOL BIRD DAY. Annual half-day nature celebration at Lincoln Elementary School on West 9th Street in Santa Rosa. Contact Janet Bosshard - bosshard@sonic.net or 707-526-5883 – to see how you can help.

Thursday, May 16, 8:30 AM to 10:30 AM

RIVERFRONT REGIONAL PARK. From Windsor, take Windsor River Rd west, then head south on Eastside Rd for about one mile. The park entrance will be on the right. Meet in the parking lot near the redwood grove. Remember to use your Sonoma County park pass or purchase a day pass as you enter. Wear layers and mud-friendly shoes. We will look for spring birds,

as well for the Great Blue Heron rookery. Heavy rain cancels. Leader: Janet Bosshard, 526-5883.

Saturday, May 18, 7:15 AM to 3:00 PM

NORTH GEYSERS ROAD. This trip visits a very rich and underappreciated area of Sonoma County. We expect birds not seen on other trips, with lots of breeding activity. Meet at the Park and Ride lot adjacent to the PG&E substation on River Rd., just west of Hwy 101. We will need to combine into as few cars as possible, as parking is very limited along the road. Bring lunch. Leader: Gordon Beebe, 583-3115 call or text msg.

Monday, May 20, 6:00 PM

ANNUAL MEETING and POTLUCK. First United Methodist Church, 1551 Montgomery Drive, Santa Rosa. Dinner and announcements are at 6:00 PM and election of officers and speaker at 7:00 PM – "Our Northern California Wild World." This is a free event and all are welcome.

Saturday, June 1, 7:30 AM to 3:00 PM

WILLOW CREEK and DUNCANS MILLS. Meet at the Duncans Mills parking lot off of Moscow Rd. Turn right as you enter the lot, to the right of the Gold Coast Bakery. We will carpool to Willow Creek Rd, then walk sections of the road, covering riparian and chapparal/grassland habitats. Bring lunch for Duncans Mills, with a final stop at Cassini Ranch for Wood Ducks. Leader: Gordon Beebe, 583-3115 call or text msg.



OUT & ABOUT

Bird Rescue Center's Open House

3430 Chanate Road, Santa Rosa CA 95404 (physical location - County Farm Drive)

April 6, May 4, and first Saturday of every month, 10:00 AM to 1:00 PM

View Bird Rescue's museum and 17 resident birds of prey and a Common Raven. The handlers will have them out of their mews, tell you about each raptor, and answer questions you have about the birds. Questions? Call (707) 523-2473.

Olympic BirdFest 2019 (16th annual)

Dungeness River Audubon Center, Sequim, WA 98382

Friday through Sunday, April 12-14

Feel like a change of scene? Enjoy guided birding trips and boat tours on quiet bays and estuaries, sandy beaches, a protected island bird sanctuary, wetlands, tide pools, rainforests, and lush river valleys. Inquire at 360-681-4076 or info@olympicbirdfest.org.

Pt. Reyes Birding and Nature Festival (10th annual)

Pt. Reyes National Seashore

Friday through Sunday, April 26-28

Learn all about Pt. Reyes through field outings and classroom events in Marin and Sonoma counties focused on birds, wildlife, plants and marine life, combined with opportunities for hiking, biking, kayaking, art, and field photography in this information-packed 3-day event. Check it out at www.pointreyesbirdingfestival.org/.

Twilight Hike

Bouverie Preserve, 13935 Highway 12, Glen Ellen, CA 95442

Friday, May 31, 6:00 to 8:00 PM

Join a small group led by a trained Bouverie volunteer to experience the beauty and natural history of this 535-acre preserve just as dusk arrives and the animals start to appear. Hikes are no more than 2.5 miles long, and visitors of all ages are welcome. \$20 per person suggested donation. Daytime excursions at Bouverie are available on Guided Nature Walks from 10:00 AM to 12:00 noon on Saturday April 13 and on Saturday, May 4. Go to www.egret.org/calendar-public/month for information and online registration for these events.

Learning Trip to the Northern Sierra

Botanist **Peter Warner** who will present at our September 2019 membership meeting is offering a hands-and-eyes-on field course June 23-29, 2019 to the upper Feather River Watershed. Headquarters for the field trip will be the University of CA Forestry Camp in Meadow Valley, Plumas County. Peter shares the introductory course will explore floristic and vegetational diversity of northern Sierra Nevada ecosystems, including plant identification and general ecology - and other experiences to connect with the majesty of the area. Course fees include meals and lodging (not transportation). For info on how to register and questions, please contact: Peter Warner, (707) 666-9071, phytopagan@sonic.net.

True Wild African Safari

Dec 2019

Conservationist Dr. Quinton Martins and his partner, Elizabeth, have launched the safari company, True Wild. In addition to continuing his research and project with mountain lions through Audubon Canyon Ranch, Dr. Martins and botanist/ecologist Peter Bond will lead a safari to Africa Dec 1-13, 2019. The wild savannas and natural world of South Africa will be explored on this special journey. Madrone Audubon is being offered a \$300/person donation to our Chapter for members who join the trip. For more information and specifics about the trip, please contact Dr. Quinton or Elizabeth Martins, info@truewildsafaris.com, (707) 721-5450. Website with info: www.truewildsafaris.com.

Attention eBirders!

Madrone is working on a checklist of the birds at Taylor Mountain Regional Park, in conjunction with Sonoma County Regional Parks.

Post your sightings to eBird and help us build our database.



Tree Swallow

Courtesy of Gordon Beebe



Little Known Birding Spots in California

By Ruthie Rudesill

Thank you to everyone who attended the February 18th membership meeting. Here are some details on the locations featured in my talk that evening.

UC Davis Putah Creek Riparian Reserve (www.arboretum.ucdavis.edu/putah-creek) has two entrances but the birders use the west end located off Pedrick Rd (exit from Hwy 80 Dixon and head north) After the bridge over Putah Creek immediately turn left into unmarked gravel road. Parking area is visible from here. Walk east under bridge and follow trails to the creek (this side is Yolo County. Other side is Solano County.) The “bath” area is about 300 yards along creek. Best birding during late August/early September for migrants but good in Spring as well.

Mix Canyon Road/Blue Ridge Road is accessed from Pleasants Valley Road in Solano County. Caution -one lane winding road. Mix Canyon Road intersects Blue Ridge Road at the top of ridge. Turn right (nw) and bird along road (other side is Napa County.) There is a wide turnout to park. Good anytime for resident chaparral species but first week of May at day break is best for migrants flying over the ridge.

Bear Valley Road/East Park Reservoir located in Colusa County accessed from Hwy 20 (near Hwy 16 turn) turn north on good dirt road. Bird along creek as road climbs to Bear Valley, which is 10 miles long. Continue north to Lodoga and follow signs to Park (closed in winter.) Lodoga Road continues through mountains to the Central Valley but is a dirt track. Winter raptors and spring wild flowers in April.

Del Puerto Canyon (Stanislaus County) is accessed from Hwy 5 Patterson at Diablo Grande exit turn right and then right. Del Puerto Canyon Road runs about 22 miles to the top where it meets Mines Road and San Antonio Road. Frank Raines Park is about half way. Best on Spring, hot in summer.

San Joaquin River NWR (www.fws.gov/refuge/san_joaquin_river/) home the very endangered cute Riparian Brush Rabbit. Accessed from Hwy 132 (from Hwy 580/5) turn on River Rd to Dairy Rd. The bunnies are near the office lawn late afternoon. Trails to river for riparian birds from here.

Red Rock Canyon State Park in Kern County (www.parks.ca.gov/?page_id=631) off Hwy 14. Desert wildlife, spectacular scenery.

Bird Rescue Center to Relocate

For the latest information on the Bird Rescue Center’s search for a new home, please visit the BRC website and learn how we can help: www.birdrescuecenter.org/save-brc/

Madrone Audubon has reached out to the Board of Supervisors on behalf of Bird Rescue via correspondence, and we remain involved. Please be active and involved on their behalf.



Spotted Owl

Courtesy of Bird Rescue

Donating via PayPal!

Madrone Audubon accepts PayPal donations via our website, www.madroneaudubon.org.

If you access PayPal, please include in the note: Mailing address & how you’re donating:

For a new membership, membership renewal or a donation to the Chapter.

Thank you!

Phenology Project Volunteers

Citizen science at the *Paula Lane Nature Preserve* sponsored by Madrone Audubon.

Accepting new volunteers for long-term, climate change impact project.

Visit 1 hour monthly, observe for 9 avian, 2 mammal & 4 plant species.

Enter observations in Nature’s Notebook/National Phenology Project.

To volunteer, contact:

Susan Kirks, Madrone Audubon President.
707-241-5548, susankirks@sbcglobal.net

(Beginning birders/naturalists welcomed)



Madrone Audubon Bylaws – Amendments

Our Chapter Bylaws, last amended in 2010, were recently reviewed. Amendments are proposed. An ad hoc committee of current and past Presidents, Susan Kirks and Gordon Beebe, presented proposed amendments to the Board of Directors in February 2019; proposed amendments were approved by the Board to be presented to our membership.

The proposed amendments update and add relevant information to support Madrone Audubon’s mission and functioning. A summary of the proposed amendments is published in the *Leaves* prior to a vote and approval.

Proposed bylaws amendments are also required to be read at two consecutive membership meetings of the Chapter (February and March 2019), with a copy of the proposed amendments available for review at those meetings. At our April 2019 membership meeting, we will request a motion to adopt the amendments with a vote at that meeting.

Questions, please contact Susan Kirks, Chapter President, at susankirks@sbcglobal.net or 707-241-5548.

Summary of Proposed Bylaws Amendments:

Article II: Meetings:

Twenty or more members will constitute a quorum for the transaction of Chapter business at regular meetings or a special meeting. (2010 bylaws = Twenty-five members).

Article III: Board of Directors

A majority shall constitute a quorum at any Board meeting. In the event a majority of the Board of Directors is unable to attend, five members of the Board will constitute a quorum, provided at least two elected officers are among the five members. (2010 bylaws = Six members).

Article IV: Officers

The elected Officers of the Society shall be a President, a Vice President, a Recording Secretary, a Corresponding

Secretary, and a Treasurer. All officers shall be elected to serve a term of two years or until successors have been duly installed. (2010 bylaws: Term of one year of service; Board President could serve only two successive terms.)

The description of the Vice President’s role is expanded to suggest assisting the President and also carrying out a beneficial activity or project of interest to the Vice President.

The Treasurer’s role description is expanded to reference the possibility of retaining professional services to assist the Chapter with funds management, bookkeeping and accounting.

Article V: Nominating Committee

The committee to work on nominating officers is amended to be one or two members, rather than specifying two members with a Board member. The Nominating Committee will report recommendations to the Board at the March Board meeting.

Article VII: Committees

Membership: The description is expanded to describe various duties of the Membership Chair who maintains membership information for the organization and provides membership information to the Board of Directors.

Conservation: The scope of the Chair’s activities is expanded from local and national matters to local, regional, state and national matters. The Conservation Committee is expanded to add or include subcommittees beneficial to support the scope of the Committee’s responsibilities.

Education: The committee’s activities are updated to describe activities relating to education, with a variety of activities ranging from outreach, International Migratory Bird Day program and Audubon Adventures, to family and youth outings and educational bird walks, educational programs for schools and Junior Audubon.



Bald Eagle

Courtesy of Vishal Subramanian

Investment Advisory: A new committee established with a Chair and 2 members to manage the Chapter’s Ernestine I. Smith Trust (and other potential) investment(s) and report to the Board of Directors quarterly and annually.

Article XIII: Amendments

The process for amendments remains the same, with edits to reflect the orderly process, including publication of the summary of proposed amendments in the *Leaves*.

Note: The publication of *Leaves* is every two months as of 2011, compared to monthly in 2010.

Madrone Audubon 2019-2020 Officers

President
Susan Kirks

Treasurer
Christy Holmes

Corresponding Secretary
Open

Recording Secretary
Open

Many thanks to our currently
serving Board and
committee members.

**Observations**Winter 2018/2019 • Dan Nelson • 479-2918 • birdsurf64@sbcglobal.net

Eurasian Wigeon	2/28	Flooded hay fields S. of Hudeman Slough	MB
Blue-winged Teal (4)	2/16	Willowbrook Ct., Petaluma	DN
Garganey	March	West Sacramento, Yolo Co.	M.Ob
Long-tailed Duck	3/4	Bodega Head, jetty areas	DH
Harlequin Duck (2)	12/30	Bodega Head	DN
Harlequin Duck (1)	2/28	Bodega Head, jetty area	LH
Black Scoter (4)	3/2	Bodega Head	LH, CM
White-winged Scoter	3/2	Bodega Head	LH, CM
Barrow's Goldeneye	2/10	Lake Sonoma Visitor's Center pond	JS
Hooded Merganser (2)	2/23	Ellis Creek	MS, LS
Gr. White-fronted Goose	3/3	Rainsville Rd., Petaluma	AW
Tundra Swan (1)	12/29	S. of Shollenberger, W. of Petaluma River, seen from R.R.	LC
Red-necked Grebe (1)	3/4	Jenner	LH
Marbled Murrelet (2)	12/30	Bodega Head, seen from shore	DN, BDP
Marbled Murrelet (2)	1/26	Coleman Beach, seen from shore	AW
Thayer / Iceland Gull (20)	3/4	Jenner Beach	LH
Black-legged Kittiwake (1)	2/24	Gaffney Pt., Bodega Bay	LH
Bonaparte's Gull (6)	3/4	Ellis Creek	GH
Zone-tailed Hawk(ad.)	12/28-30	Denmark Rd., Sonoma	GH, et al
Short-eared Owl (2)	1/20	Lakeville Hwy. S. of Cannon Ln.	DN
Burrowing Owl (2)	2/16	Skagg's Island	RR, et al
White-faced Ibis (1)	12/2	Ellis Creek	CM
Little Blue Heron (ad.)	Jan-Feb	Loch Lomond Marina area, Marin Co., continuing	M.Ob
Cattle Egret (3)	2/23	Ellis Creek	MS, LS
American Bittern (4)	3/4	Ellis Creek	GH
Black Rail (3 heard)	3/4	Ellis Creek	GH
Pacific Golden-Plover (2)	1/1	Reclamation Rd.	SS
Long-billed Curlew (30)	3/4	Stony Pt. Rd. Christian Fellowship; S. of Todd Rd.	WD
Red Phalarope	12/30	Bodega Head	DN, BDP
Red Phalarope (2)	1/24	Bodega Head	PC
Red-naped Sapsucker (ad.)	1/18	Occidental	DH, MF
Barn Swallow (4)	2/23	Ellis Creek	MS, LS
Violet-green Swallow (6)	2/23	Ellis Creek	MS, LS
Tree Swallow (25)	2/23	Ellis Creek	MS, LS
Pacific-slope Flycatcher	1/22	Santa Rosa Creek trail (2nd year returnee)	BW, JS
Tropical Kingbird	12/30	5559 Sierra Grande area; Carmet	MT, TT
Vermilion Flycatcher	Jan-Feb	Zamora Cemetary, Yolo Co. (returning winterer)	M.Ob
Townsend's Solitaire (1)	2/11	Mt. Saint Helena summit	GH
Brown Thrasher	Feb.-Mar	Sebastopol; over-winterer/returnee from 2 years previous	VB
California Thrasher (1)	3/4	West County trail; between Graton / Occidental Rds.	C.Haille
Rock Wren	2/21	Lake Sonoma Visitor Center	CM
Phainopepla (male)	12/30	Sonoma; 8th St. E. x E. Napa St.	DT
Cassin's Vireo (photo)	2/24	Hinebaugh Creek; W. of 101, N. of R.P. Expressway	S.Gragg
Hermit Warbler	2/11	Stillwater Cove; Canyon Loop trail	CC
Yellow Warbler	2/23	Ellis Creek, in oaks near restroom	M.Ob
Palm Warbler	1/1	Delta Pond area	DL
Western Tanager	2/23	Spring Creek Drive, Santa Rosa	CK
Great-tailed Grackle (2)	3/4	Ellis Creek wetlands	GH
Swamp Sparrow	12/29	Spring Lake; channel between lake/swimming lagoon	WD
Harris' Sparrow (Imm.)	3/1	Hilliard Ct. area; Santa Rosa (photo)	CN

CONTRIBUTORS: Murray Berner, Veronica Bowers, Peter Colasanti, Chris Conard, Lucas Corneliusen, Wendy Dandridge, Mookie Fudemberg, Sue Gragg, Connie Haille, Denise Herzberg, Lisa Hug, Gene Hunn, Candace Krout, David Lumpkin, Colin Meusel, Many Observers, Christine Neitzel, Dan Nelson, Benjamin D. Parmeter, Ruth Rudesill, Josh Snead, Scott Sorby, Lucas Stephenson, Mark Stephenson, David Tomb, Miles Tuffli, Teresa Tuffli, Brian Webb, and Alan Wight.



Madrone Audubon Society

Post Office Box 1911
Santa Rosa, California 95402

April/May 2019

Madrone *Leaves* is published bimonthly from October through May, plus one issue each in June and September.



**TIME SENSITIVE MATERIAL
PLEASE DELIVER PROMPTLY
CALENDAR ENCLOSED**

MADRONE LEAVES



Madrone Audubon Society meets on the third Monday of each month, except in June, July, August, and December. Meetings start at 7:00 PM at First United Methodist Church, 1551 Montgomery Dr., Santa Rosa. All membership meetings and walks are open to the public. Information: e-mail - info@madroneaudubon.org.

President: Susan Kirks - susankirks@sbcglobal.net 241-5548
Vice President: Position open
Recording Secretary: Position open
Corresponding Secretary: Position open
Treasurer: Christy Holmes - christyeholmes@gmail.com 805-895-6482
Membership: Questions to Susan Kirks (Position open) - susankirks@sbcglobal.net
Conservation: Diane Hichwa - dhichwa@earthlink.net 785-1922
Education Kits: Barbara Novak - b.novak34@gmail.com 795-3996
Programs: Position open
Junior Audubon: Position open
Outreach: Position open
Publicity Chair & Investment Advisory Committee Chair:
 Nancy Hair - doghairmancy@yahoo.com 823-1073
Website Editor: Gordon Beebe - gdbeebe@earthlink.net 583-3115
Saturday Bird Walks: Gordon Beebe - gdbeebe@earthlink.net 583-3115
Bird-A-Thon Coordinator: Carolyn Greene - cgnpark@yahoo.com 805-443-7289

Audubon Adventures: Carolyn Greene - cgnpark@yahoo.com 805-443-7289
Leaves Editor: Asenath LaRue - asenathlarue@gmail.com 608-293-1719
Leaves Production: Kris Hutchins - kris@hutchins1.net 477-8156
Hospitality: Position open
Observations: Dan Nelson - birdsurf64@sbcglobal.net 479-2918
ACR Rep: Bryant Hichwa 785-1922
Habitat Gardening and Ex Officio Board Member:
 Cheryl Harris - cheryleh70@gmail.com 294-5423
Sonoma County Water Coalition Rep: Paula Zerzan - pzerzan@comcast.net 935-1523
BBA: Gordon Beebe - gdbeebe@earthlink.net; Tiffany Erickson, tiffymm66@gmail.com
IMBD: Veronica Bowers - vlbowers@gmail.com 829-2955
Christmas Bird Count: Peter Leveque and Stacy Li - stacyli@sonic.net 566-7937
Bird Rescue Center: 523-BIRD
Native Songbird Care & Conservation: 484-6502
Northern California Rare Bird Alert 415-681-7422
Audubon-California: Gaylon Parsons - gparsons@audubon.org 415-644-4605
National Audubon Society: 225 Varick Street, NY, NY 10014 212-979-3000

Join Madrone Audubon – Support Your Local Chapter

Please complete this form if you wish to join Madrone Audubon or renew your Madrone membership

Please note: We are a chapter of National Audubon, but membership in and donations to Madrone Audubon are separate and support our local chapter. Membership and donations are tax deductible.

- New member Renewal
- Senior \$15 Basic Member \$20 Family \$30
- Sustaining \$50 Supporting \$100 Patron \$500

Name _____

Address _____

City _____ State _____ Zip _____

Phone _____ Email _____

Please send my *Leaves* via email

Please make your check payable to "Madrone Audubon Society."

Detach this panel and mail to: **Madrone Audubon Society,**

P.O. Box 1911, Santa Rosa, CA 95402

Madrone Audubon is a 501(c)(3) nonprofit organization. Our tax identification number is 94-6172986

Visit us on the Web at: <http://www.madroneaudubon.org>